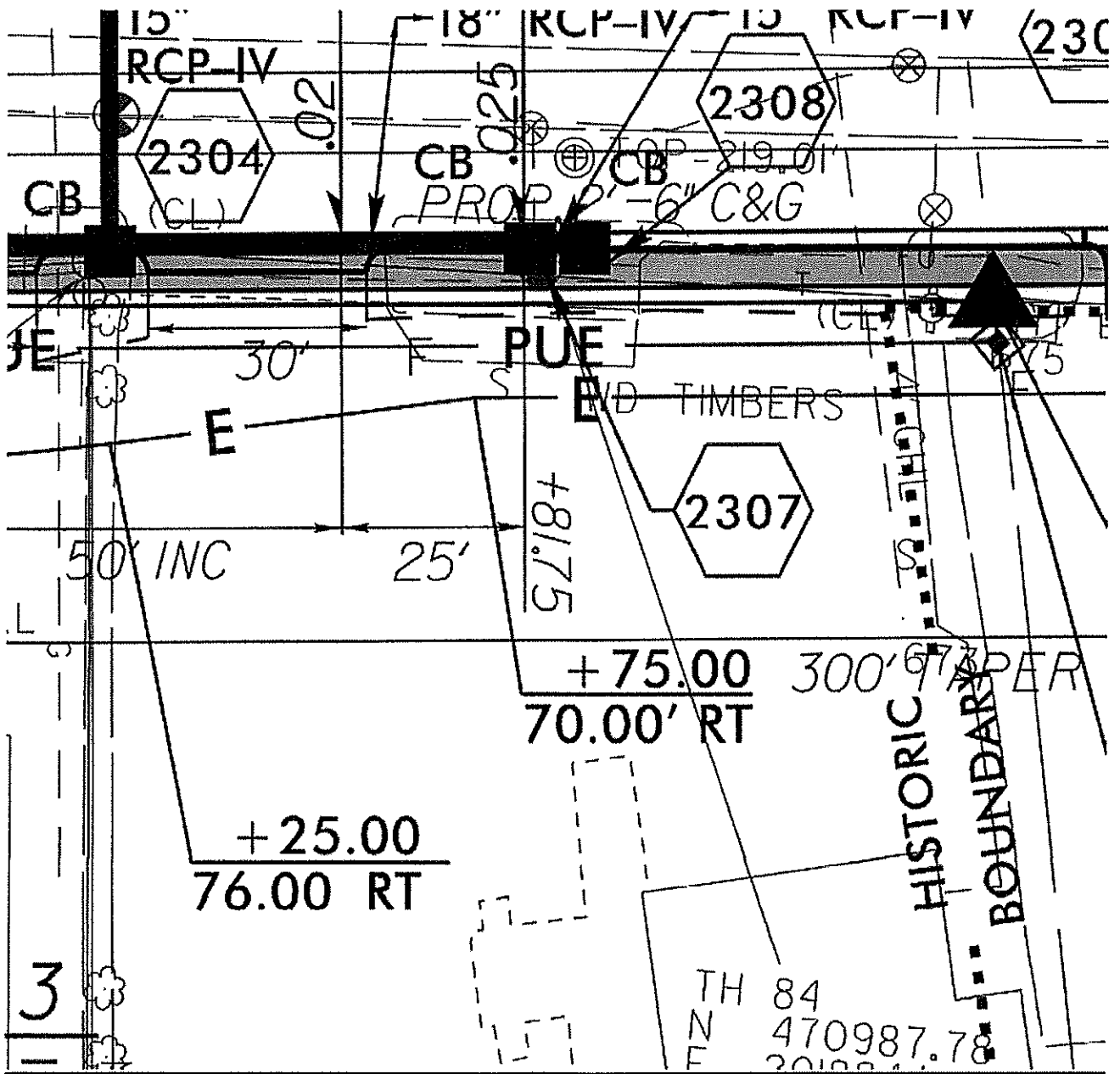
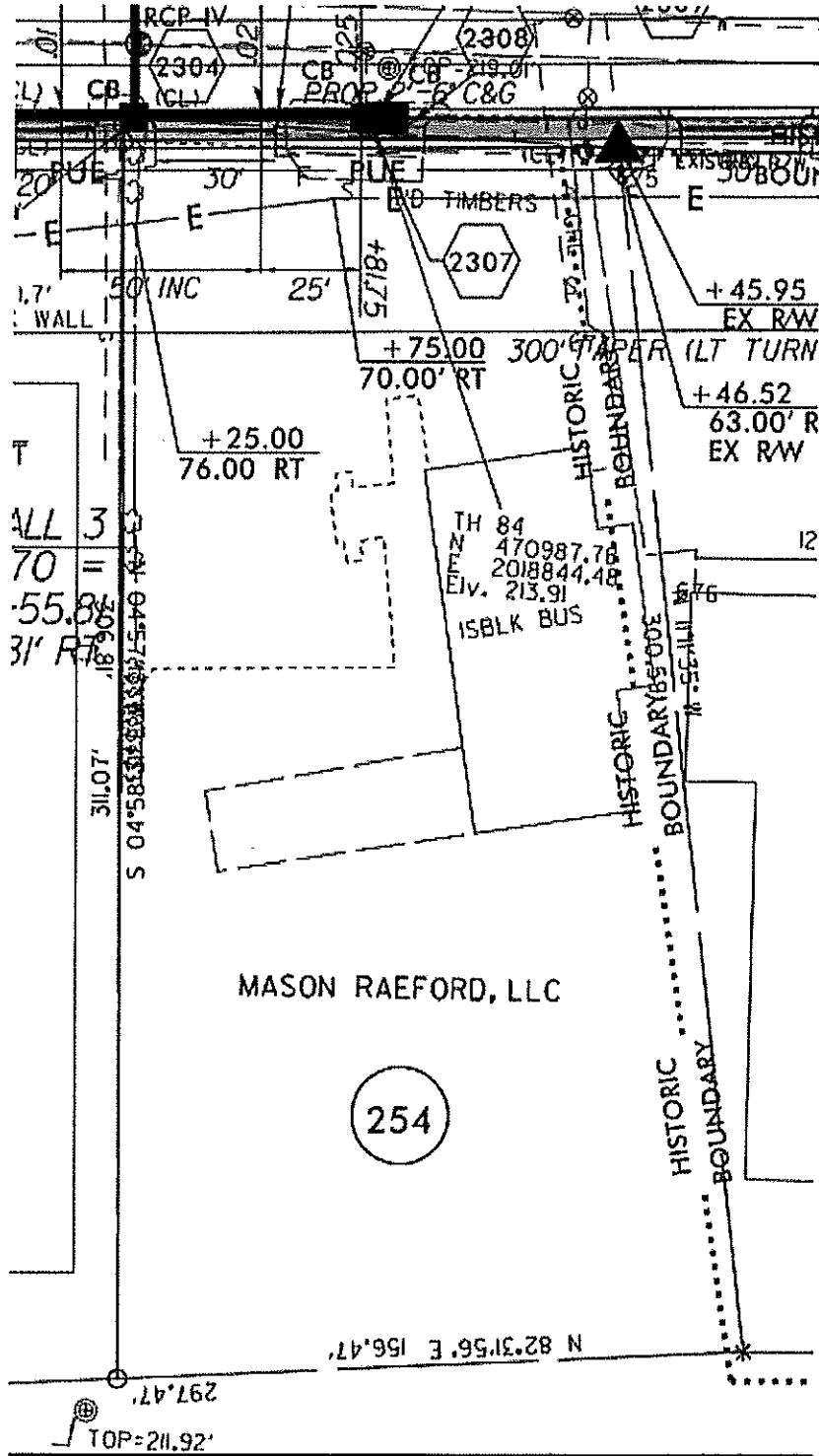


ENLARGEMENT OF DOT TAKING MAP



DOT TAKING MAP



SUMMARY OF THE IMPROVEMENTS LOST TO THE ROW AND THE PUE

Asphalt Paving:	340 sf.
Concrete Paving:	280 sf.
Concrete Curb:	30 lf.
Signage:	The main sign at the front of the site
Chain Link Fencing:	Small section at the front
Retaining Wall:	Small section at the front
Landscaping:	Area at the front and sides of the site
Curb Cuts:	The eastern most curb cut will be lost due to the taking. In addition, the western most curb cut will be reduced to a width of 30-feet. (The "As Is" eastern most curb cut was measured by the appraiser at 29 feet in width and the western most curb cut measured at 34.75 feet in width.