

FOR SALE

Main St/E. Palmer St
Raeford, NC 28376



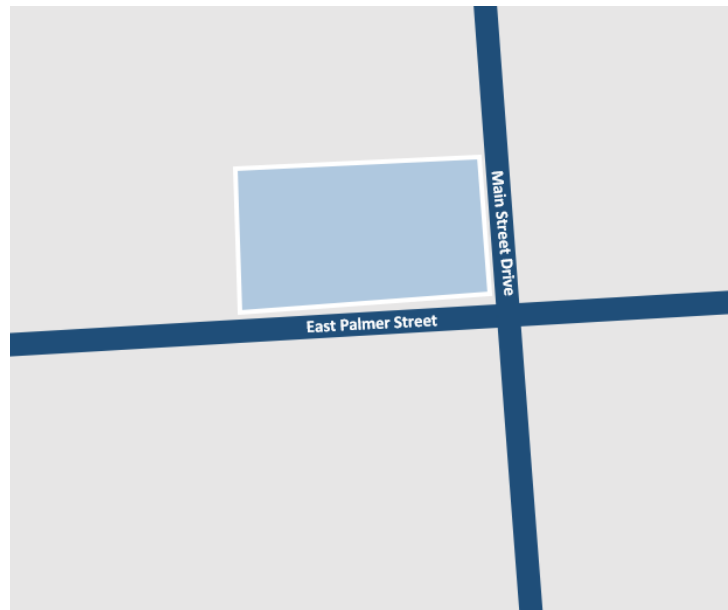
EXCELLENT LOCATION ON MAIN & PALMER, RAEFORD

Offering Summary

Sale Price: \$795,000.00
Size: 8.34 Acres
Zoned: HC - Heavy Commercial
Traffic Count: 7,100 VPD

Property Description

Commercial/ Institutional commercial site. Excellent location on the corner of S. Main Street and Palmer Street in Raeford, Hoke County. The 8.34+/- Acres is cleared and flat. Ready for development with access to city utilities.

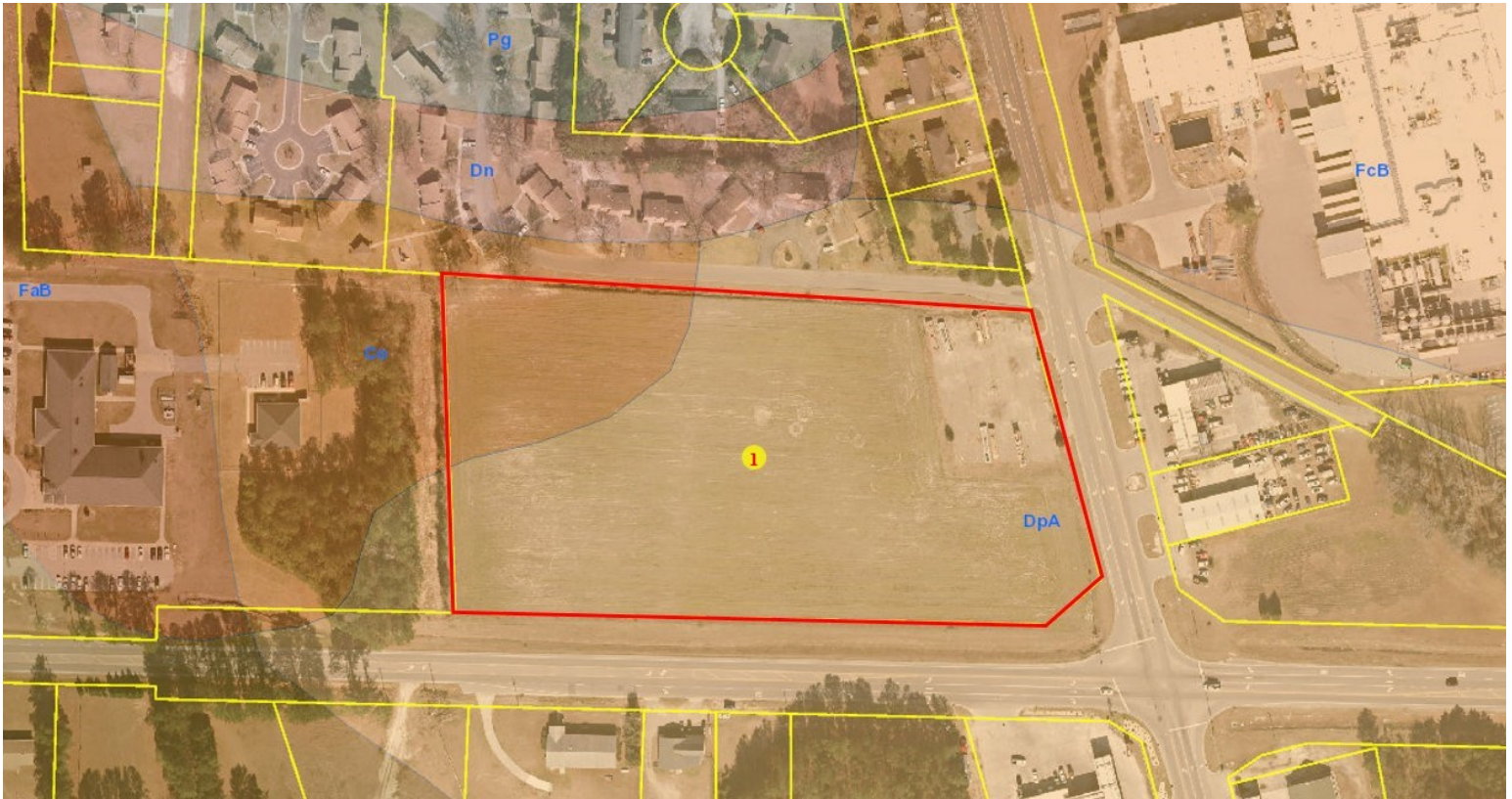


Crawford MacKethan

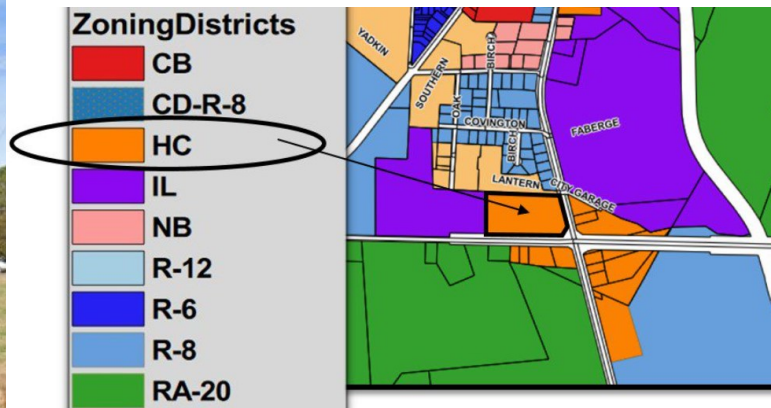
910.977.2247 | CBMacKethan@aol.com

FOR SALE

Main St/E. Palmer St
Raeford, NC 28376



3,750 SQUARE FOOT GARAGE ON OWEN DRIVE



Crawford MacKethan

910.977.2247 | CBMacKethan@aol.com