

# FOR SALE

Raeford Road  
Fayetteville, NC 28304



## 3.18 ACRES ON RAEFORD ROAD

### Offering Summary

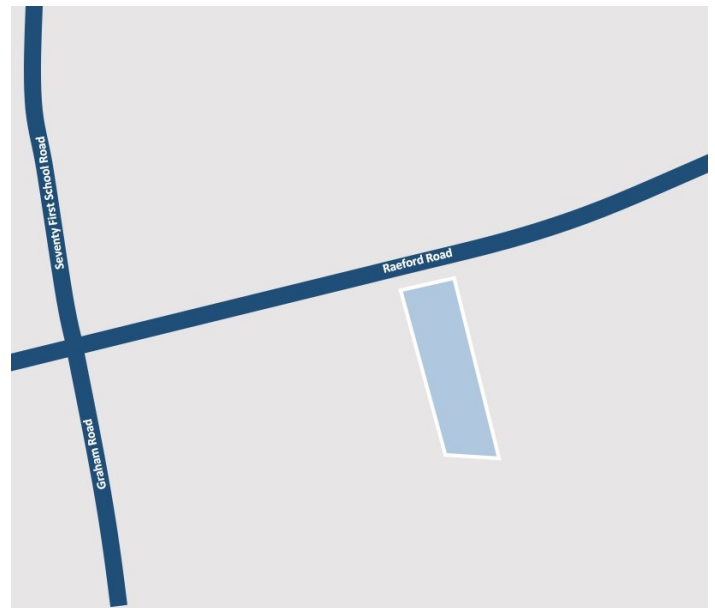
Sale Price: \$498,500

Size: 3.18 Acres

Zoned: LC - Limited Commercial

### Property Description

3.18 acres of commercial property (zoned LC) on the south side of Raeford Road across from Seventy-first High School. Near Starbucks, Walmart Neighborhood Market, Anytime Fitness, eateries and other businesses. The parcel is surrounded on the eastern, southern, and western boundaries by Lafayette Memorial Park. Utilities are close by. There are 200 feet of frontage on Raeford Road. AADT is 34,000. Multi-family & some types of self service storage are allowed.

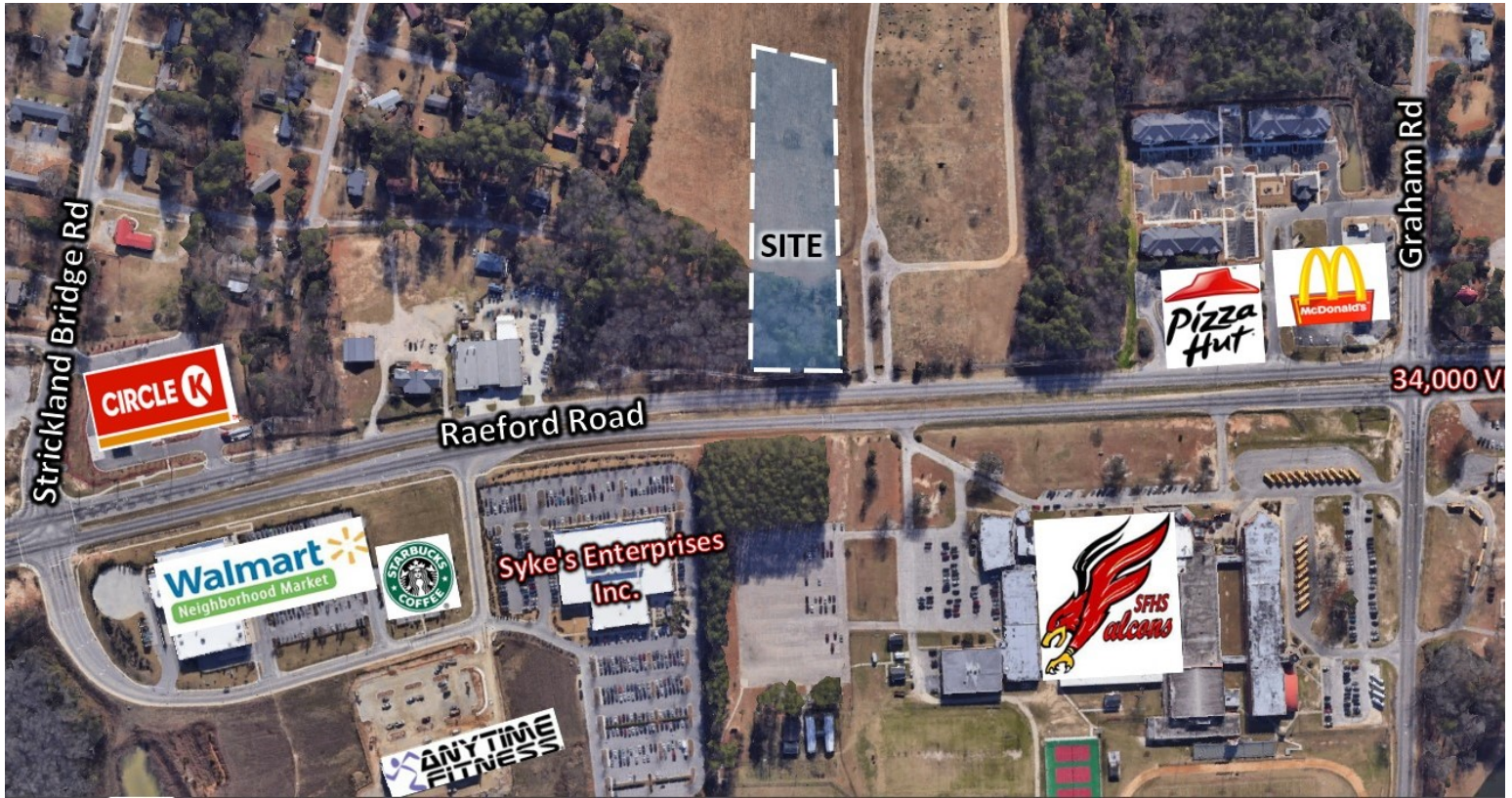


**Malinda Craven**

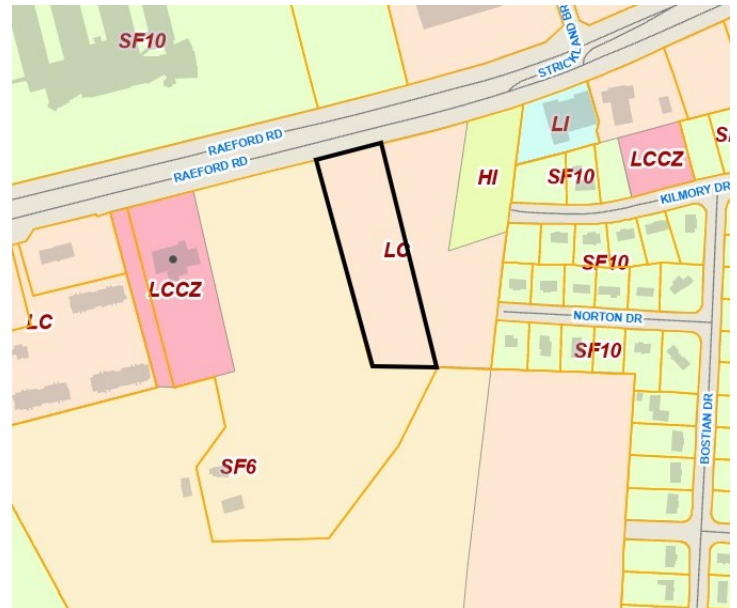
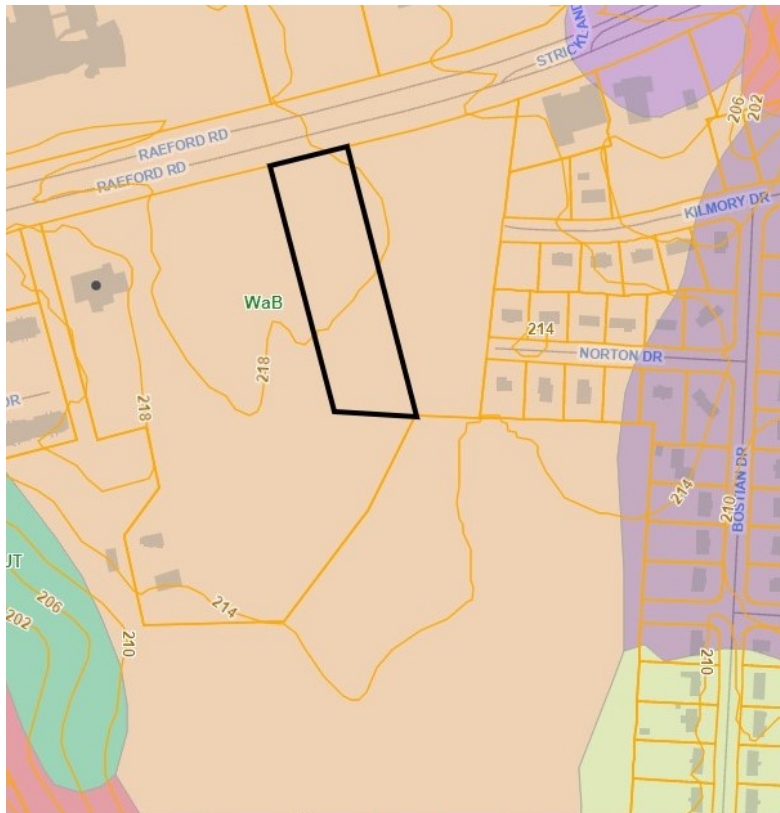
910.322.6535 | MalindaCraven@gmail.com

# FOR SALE

Raeford Road  
Fayetteville, NC 28304



## 3.18 ACRES ON RAEFORD ROAD



**Malinda Craven**

910.322.6535 | MalindaCraven@gmail.com