

## **FOR LEASE**

**2550 Ravenhill Drive, Suite 202  
Fayetteville, NC 28304**

**Franklin**  
Commercial Real Estate  
**Johnson**



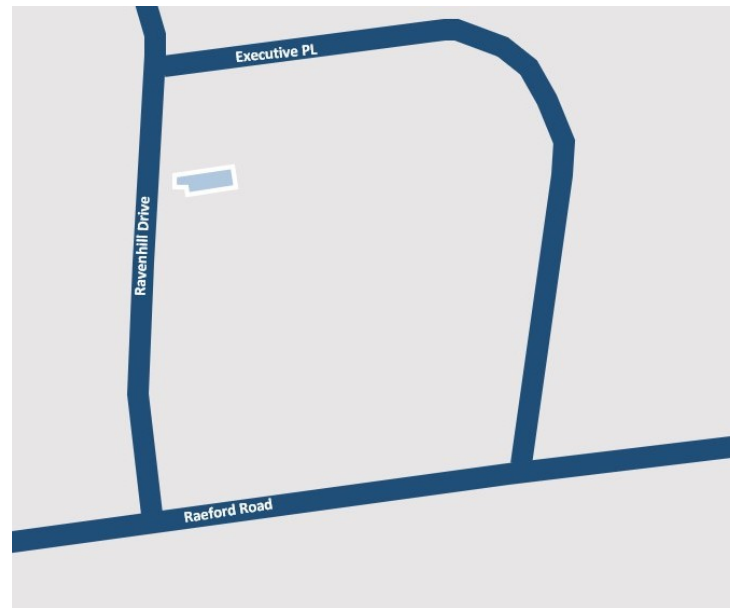
## **1,235+/- SF PROFESSIONAL OFFICE SPACE FOR LEASE**

### **Offering Summary**

Lease Price: \$2,552/Month  
Size: 1,235 +/- Square Feet  
Zoned: CC - Community Commercial  
Traffic Count: 37,000 VPD (NCDOT 2022)

### **Property Description**

Are you looking for a spacious and well-located office space? Look no further than Suite 202 in the stunning Merrill Lynch building. With its lovely wood-paneled lobby and elevator, this office space has everything you need to make a great impression on clients and employees alike. The large open entry area is perfect for cubicles and reception, and the two other offices and conference room (or three offices) provide ample space for your business needs. Plus, with plenty of parking available, you won't have to worry about finding a spot for your car. The best part? The lease price includes CAM, taxes, and insurance, making it an affordable choice for your business.



**Franklin Johnson**

910.818.8400 | JFJohnson1@nc.rr.com

**FranklinJohnsonCommercial.com**



## FOR LEASE

2550 Ravenhill Drive, Suite 202  
Fayetteville, NC 28304

Franklin  
Johnson  
Commercial Real Estate



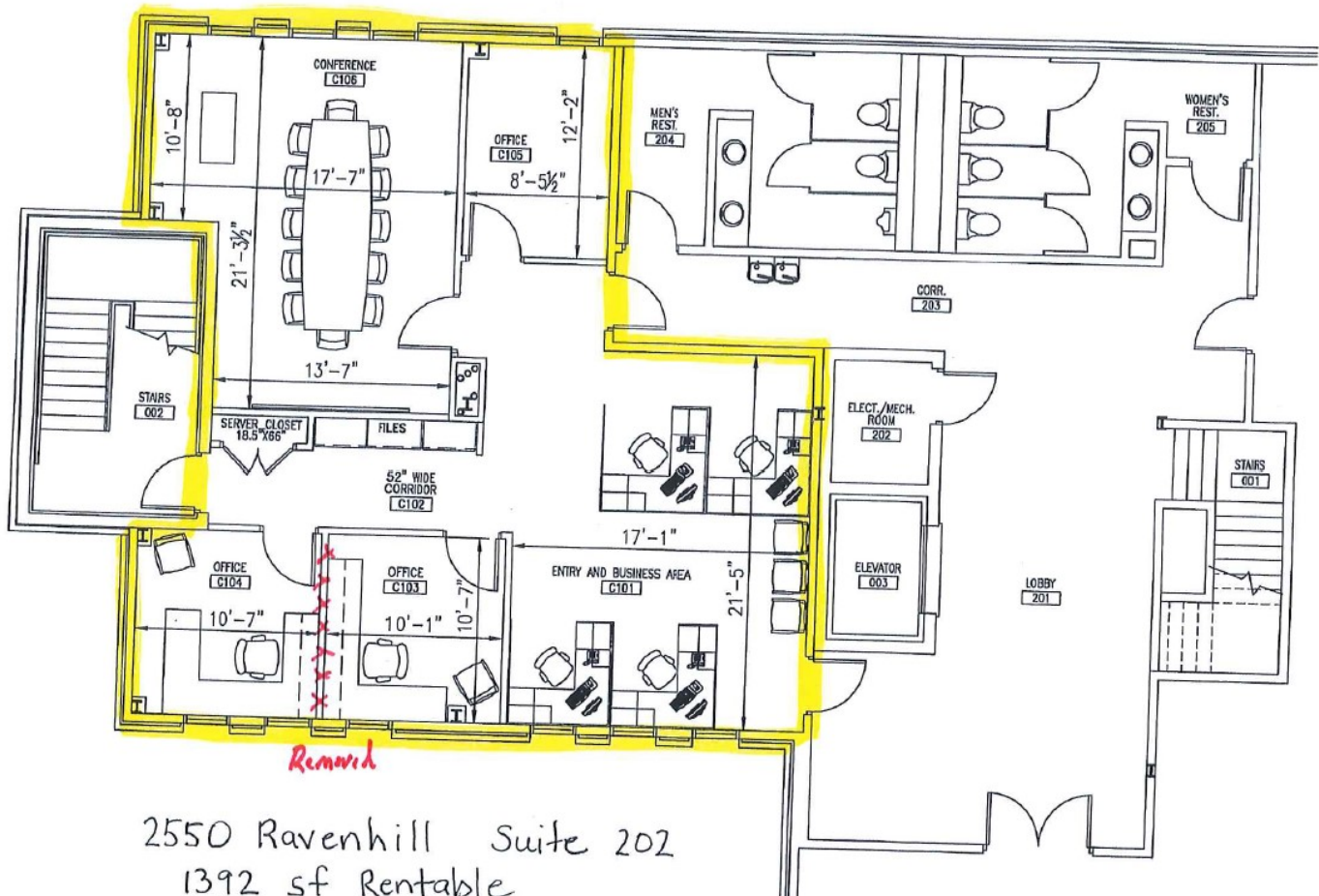
**Franklin Johnson**

910.818.8400 | JFJohnson1@nc.rr.com

## FOR LEASE

2550 Ravenhill Drive, Suite 202  
Fayetteville, NC 28304

Franklin  
Johnson  
Commercial Real Estate



2550 Ravenhill Suite 202  
1392 sf Rentable  
1235 sf Useable

Franklin Johnson

910.818.8400 | JFJohnson1@nc.rr.com